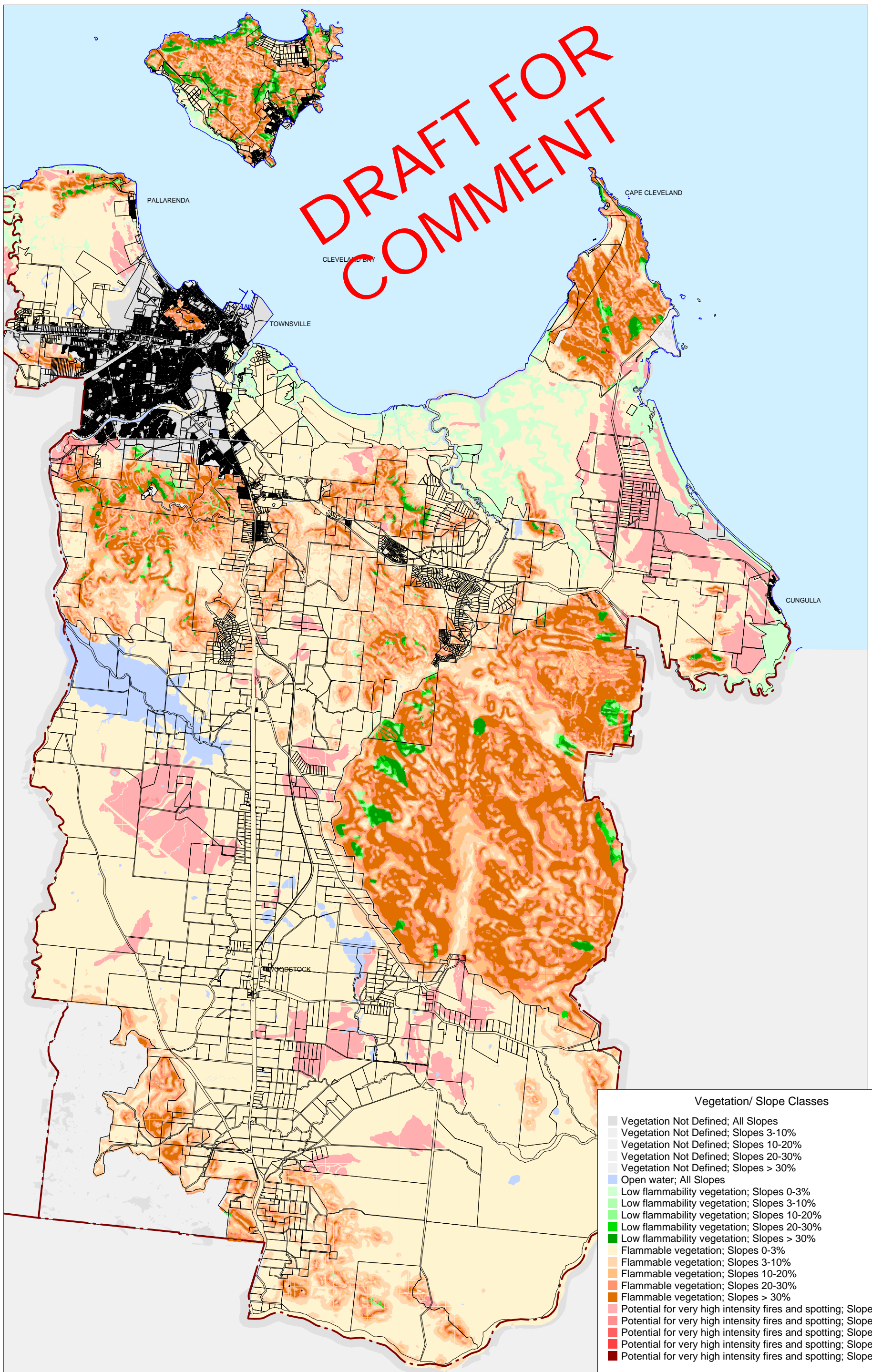


DRAFT FOR COMMENT



Vegetation/ Slope Classes

- Vegetation Not Defined; All Slopes
- Vegetation Not Defined; Slopes 3-10%
- Vegetation Not Defined; Slopes 10-20%
- Vegetation Not Defined; Slopes 20-30%
- Vegetation Not Defined; Slopes > 30%
- Open water; All Slopes
- Low flammability vegetation; Slopes 0-3%
- Low flammability vegetation; Slopes 3-10%
- Low flammability vegetation; Slopes 10-20%
- Low flammability vegetation; Slopes 20-30%
- Low flammability vegetation; Slopes > 30%
- Flammable vegetation; Slopes 0-3%
- Flammable vegetation; Slopes 3-10%
- Flammable vegetation; Slopes 10-20%
- Flammable vegetation; Slopes 20-30%
- Flammable vegetation; Slopes > 30%
- Potential for very high intensity fires and spotting; Slopes 0-3%
- Potential for very high intensity fires and spotting; Slopes 3-10%
- Potential for very high intensity fires and spotting; Slopes 10-20%
- Potential for very high intensity fires and spotting; Slopes 20-30%
- Potential for very high intensity fires and spotting; Slopes > 30%

Hazard Analysis performed by Trinity Software using information supplied by Townsville City Council.


 Trinity Software
 10 Trinity Street
 CAIRNS 4870
 Ph: 4031 4877



Scale 1:200,000 when printed on a A3 sheet
 Projection Australian Map Grid Zone 55



**TOWNSVILLE CITY COUNCIL
 OVERALL BUSHFIRE
 SUSCEPTIBILITY RATING**